



# KINGSTON

## Oil-Fired Steam Boiler

Designed for reliability, high efficiency and performance for residences with chimneys

### DOMESTIC HOT WATER OPTION

The Kingston's optional tankless coil feature eliminates the need for a separate water heater, making it ideal for installation in small spaces.



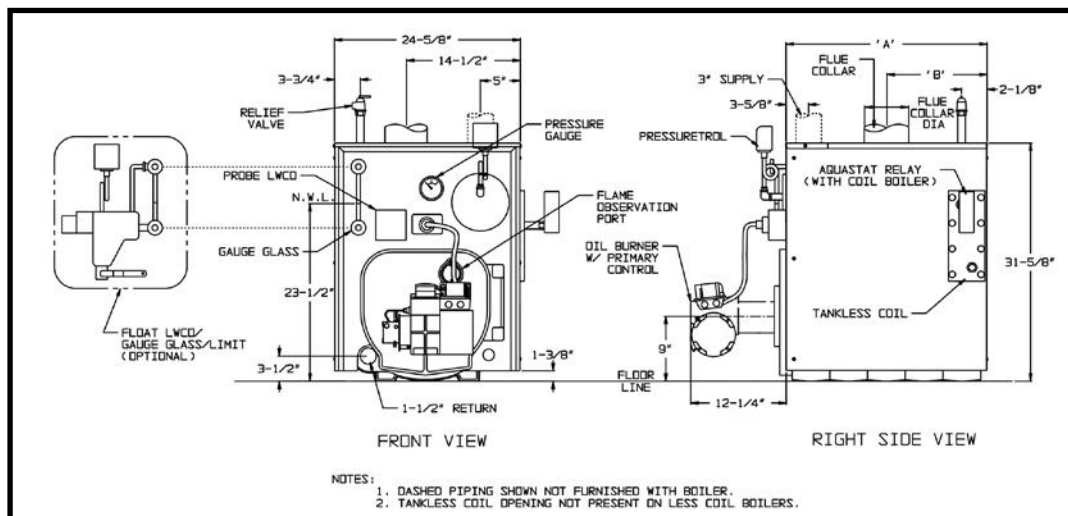
- Efficiencies up to 85.4%
- Rugged wet base, cast iron heat exchanger
- Cast iron swing-open burner door for easy service
- Optional side-mounted tankless coil for domestic hot water production
- Choice of three oil burners: Beckett, Riello, Carlin
- Three physical sizes with nine firing rates

See back side for piping configurations.

Quality  
Value &  
Service

# KSZ SERIES - KINGSTON

## TECHNICAL SPECIFICATIONS



Shown with both LWCO types. Probe type LWCO is standard.

CROWN MODEL NUMBER	NO. OF SECS	BURNER INPUT		HEATING CAPACITY (MBH)	AHRI NET RATINGS		AFUE %	DIMENSIONS (IN.)		FLUE COLLAR DIA. (IN.)	TANKLESS HEATER (GPM)	SHIPPING WEIGHT (LBS)
		GPH	MBH		MBH	SQ. FT.		"A"	"B"			
KSZ065	3	0.65	91	79	59	246	85.1	17-3/8	8-5/16	6	2.25	570
KSZ075	3	0.75	105	90	68	283	84.5	17-3/8	8-5/16	6	2.25	570
KSZ100	3	1.00	126	119	89	370	83.5	17-3/8	8-5/16	6	2.50	570
KSZ090	4	0.90	140	110	83	346	85.0	22-3/8	10-13/16	7	2.50	690
KSZ125	4	1.25	166	149	112	467	84.2	22-3/8	10-13/16	7	2.75	690
KSZ150	4	1.50	175	177	133	554	83.1	22-3/8	10-13/16	7	3.00	690
KSZ120	5	1.20	210	147	110	458	85.4	27-3/8	13-5/16	8	2.75	810
KSZ175	5	1.75	245	207	155	646	83.1	27-3/8	13-5/16	8	3.25	810
KSZ200	5	2.00	280	235	176	733	82.9	27-3/8	13-5/16	8	3.50	810

- Altitudes above 2,000 ft. - ratings should be reduced at a rate of 4% for each 1,000 ft. above sea level (US only)
- The Net Steam Ratings are based on a piping and pickup allowance of 1.33.
- Burner Input Rating, GPH is based on #2 oil with a Gross Heating Value equal to 140 MBH
- Minimum recommended chimney size is 8"x8"x15'
- The manufacturer should be consulted before selecting a boiler for installations having unusual piping and pickup requirements, such as intermittent system operation, extensive piping systems, etc.

All residential cast iron steam boilers include a full one year warranty. A limited, 12-year warranty is provided for the cast iron heat exchanger. 5-year and 10-year extended warranties covering parts and labor are also available. Visit [VelocityBoilerWorks.com](http://VelocityBoilerWorks.com) for complete details.

### OPTIONAL EQUIPMENT:



The Kingston KSZ Series boiler is compatible with our Steam Boiler Piping Kit, a more convenient way to pipe steam boilers. For more information on the Steam Boiler Piping Kit, visit [VelocityBoilerWorks.com](http://VelocityBoilerWorks.com).

### ADDITIONAL FEATURES/BENEFITS

- Factory tested Honeywell control system
- Attractive split jacket easily removed for servicing
- Burner equipped with twist disconnect plug
- Available in "Shorty" pac version with burner packaged separately for easy delivery

Specifications are subject to change without notice.



[VelocityBoilerWorks.com](http://VelocityBoilerWorks.com) | Philadelphia PA

KSZ - 10/16  
PN 980273